



2009-2010 Fact Book
Bethune-Cookman University

Office of Institutional Research, Planning, and Accreditation
640 Dr. Mary McLeod Bethune Boulevard
Daytona Beach, FL 32114-3099
www.cookman.edu

PREFACE

The Office of Institutional Research, Planning and Accreditation is pleased to present the thirtieth edition of the Bethune-Cookman University Fact Book. This publication is the definitive source of information that chronicles the University's progress over the past year in fulfillment of the Bethune-Cookman University mission.

The 2009-2010 Fact Book is intended to provide the university community and others with a summary of institutional data about Bethune-Cookman University. The Fact Book is a consolidation of institutional information gathered from various sources. The information contained within this document is used for strategic planning, annual decision making, program accountability and ultimately institutional effectiveness. The data presented is a compilation of information collected, recorded or retrieved by the fall and spring Census dates and used in reporting to both internal and external agencies.

An electronic version of this publication can be accessed through the University's home page or directly at <http://www.cookman.edu>. The fact book is placed on the web in its entirety to allow users to view, download or print the entire book or sections as needed.

Our sincere thanks are extended to the "Great Bethune-Cookman family" for their time, information, and effort towards this publication. Requests for the inclusion of additional information that you feel is pertinent should be forwarded to the Office of Institutional Research to the attention of the director.

Compiled by the
Office of Institutional Research, Planning, and Accreditation
Dr. Willis Walter Jr., Vice President

OIRPA Department Members:
Tarji Kinsey, Research/Data Analyst
Gloria Sims-Brown, Executive Assistant

Table of Contents

PREFACE
TABLE OF CONTENTS
QUICK GLANCE

UNIVERSITY PROFILE

Accreditation.....	7
The History of Bethune-Cookman University.....	8
The Mission and Vision of Bethune-Cookman University.....	9
2005-2010 University Strategic Plan.....	10
University Majors by CIP* Codes, Division & Degrees Offered.....	11

ADMINISTRATION

The Paradigm of Bethune-Cookman University.....	13
Core Values	
The Points of Integrity	
The Organizational Structure of Bethune-Cookman University.....	15
The Board of Trustees Membership.....	16
The President of Bethune-Cookman University.....	18
University Officers	
Administration and Directorship	20
University Department Heads.....	21

STUDENT INFORMATION

Student Enrollment Profile.....	23
Student Headcount by School, Department, Classification, and Gender.....	25
Student Headcount by School and Department.....	27
Undergraduate Enrollment by Ethnicity and Gender.....	29
Undergraduate Enrollment by County.....	30

Undergraduate Enrollment by U.S. States and Territories.....	32
Student Enrollment by Religious Preference.....	34
Undergraduate Degrees Conferred.....	35
Student Right to Know Cohort Retention and Graduation Rates.....	38
Initial Career Placement of Graduates.....	39
Crime Statistics.....	40

FACULTY INFORMATION

Instructional Faculty by Full-Time, Part-Time, and Full-Time Equivalent.....	42
Faculty/Student Ratio.....	42
Full-Time Instructional Faculty by School, Gender, Ethnicity, Rank, Tenure, and Degree.....	43
Full-Time Teaching Faculty Profile.....	45
Five Year Staff Profile.....	46

LIBRARY & LEARNING RESOURCES CENTER

Learning Resources Center Profile.....	48
Academic Computers Available for Student Use.....	49
Enrollment in On-line Courses/Electronic Information Services.....	50

FINANCIALS & RESEARCH INFORMATION

Student Cost per Academic Year.....	52
Distribution of Financial Aid Recipients by Program.....	53
Distribution of Financial Aid Recipients by Category.....	54
Pell Grant Distribution.....	55
Revenues, Gains and Support.....	56
Expenses and Losses (Fiscal Years 2004-2009).....	57
Funded Grants and Contracts.....	58
Bethune-Cookman University Campus Buildings.....	61

Quick Glance at Bethune-Cookman University



(Picture shown of Harrison Rhodes Memorial Social Sciences Building)

Bethune-Cookman University

Quick Glance

Established in 1904 and located in Daytona Beach, Florida is a four-year, private institution of postsecondary learning. Bethune-Cookman University is ranked by U.S. News and World Report 2009 America's Best Colleges edition as one of the top baccalaureate institutions in the South and one of the nation's top historically black colleges and universities. The institution is accredited by the Commission on Colleges of the Southern Association of Colleges and Schools (SACS), the Florida State Department of Education, NCATE, the National League for Nursing Accrediting Commission, Inc., the Accreditation Programs in Hospitality Administration and the NCAA National Collegiate Athletic Association. This university features the Nursing program and offers approximately 37 programs leading to baccalaureate and masters degrees. For More information, please visit www.cookman.edu.

Campus Life

Mascot	Wildcat
Colors:	Maroon & Gold
Campus Size	83 acres
Campus Buildings	58
Dormitories (4 Males, 5 Females)	9
Tuition & Fees	\$12,936
Room & Board	\$7,672

Enrollment (Full- and Part-Time; Fall 2009)

Enrollees/Head Count	3,614
Males	1,445
Females	2,169
Undergraduate Studies (Full-Time)	3,461
Undergraduate Studies (Part-Time)	153
Graduate Studies	20

Undergraduate Admission (Full- and Part-Time; Fall 2009)

First Time Freshman	1,027
Out-of-State (Includes International Students)	1,126
In-State	2,488

Degrees Conferred (Academic Year 2008- 2009) 459

Most Popular Majors:

Nursing, Criminal Justice, Business Administration, Biology, Psychology, Teacher Education

Academic Majors

Accounting, Business Administration, Business Education 6-12, Biology, Biology Education 6-12, Chemistry, Chemistry Ed. 6-12, Computer Engineering, Computer Information Systems, Computer Sciences, Criminal Justice, Educational Studies, Elementary Education K-6, English, English Education 6-12, Exceptional Education K-12, Gerontology, History, Hospitality Management, International Business, International Studies, Mass Communications, Mathematics, Music, Music Education K-12, Nursing, Physical Education K-12, Physical Education/Recreation, Physics, Physics Ed. 6-12, Political Science, Psychology, Religion and Philosophy, Social Science Education 6-12, Sociology, Speech Communication & Theatre Arts, and Transformative Leadership (Graduate Program).

Faculty & Staff

Full-Time Faculty	202	Staff (Full-Time)	298
Part-Time Faculty	28	Faculty/Student Ratio	1:17

Finance (Fiscal Year 2008-2009)

Endowment (June 2009)	\$34.8 million
Total Revenues	\$58.8 million
Total Expenses	\$63.3 million



Bethune-Cookman University Profile

(Picture shown of Old Faith Hall, Bethune Cookman College)

Accreditation

Bethune-Cookman University is accredited by the Commission on Colleges of the Southern Association of Colleges and Schools to award the Bachelor of Arts, Bachelor of Science and Master of Science degrees. Contact the Commission on Colleges at 1866 Southern Lane, Decatur, Georgia 30033-4097 or call 404-679-4500 for questions about the accreditation of Bethune-Cookman University.

The University is affiliated with the United Methodist Church and also accredited by the following agencies:

- **Accreditation Commission for Programs in Hospitality Administration**
- **Florida State Board of Nursing Licensure**
- **Florida State Department of Education**
- **National Council for Accreditation of Teacher Education**
- **National League for Nursing Accreditation Commission, Inc.**

Bethune-Cookman University does not discriminate on the basis of race, color, sex, disability, age, religion, national or ethnic origin, in its administration of its educational policies, admissions policies, scholarship or loan programs, or other college administered programs. The University is authorized under Federal law to enroll nonimmigrant students.

The History of Bethune-Cookman University

Bethune-Cookman University began in 1904 as the Daytona Educational and Industrial Training School for Negro Girls. Mary McLeod Bethune, who would eventually become a noted black educator, leader of African American clubwomen and in the 1930s, a political appointee in the Franklin Roosevelt Administration, began the school with only \$1.50 and five students. Through dedication to teaching, an extraordinary organization of volunteers, and her remarkable fundraising skills, Bethune was able to expand the girls training institute into an accredited high school.

In 1923 it merged with the Cookman Institute of Jacksonville, Florida and became a coeducational high school. The following year Bethune-Cookman Institution became affiliated with the United Methodist Church, an association which for the first time provided regular support. In 1931 the Institute became an accredited junior college now called Bethune-Cookman College. A decade later, in 1941, the Florida State Department of Education approved Bethune-Cookman's request for expanded liberal arts and education programs which allowed it to become a four year college.

Mary McLeod Bethune served as president of Bethune-Cookman until 1942 when she retired. James E. Colston served as president until 1946 when Dr. Bethune resumed the presidency for one year. In 1947 Richard V. Moore, Sr., became the institution's third president. In 1970, during his administration, the college gained accreditation by the Southern Association of Colleges and Schools (SACS-COC).

Oswald P. Bronson, Sr., Ph.D., an alumnus of the College, served as the institution's president for 29 years - from 1975 until 2004 when he was named president emeritus. Commitment to academic excellence was the cornerstone of his presidency. Under his leadership, major fields of study increased from 12 to 37. In addition, seven continuing education centers for students began operating throughout the state. While maintaining accreditation by SACS-COC, Florida State Board of Education, and The University Senate of The United Methodist Church Board of Higher Education, the college added new accreditations in the Nursing and the Teacher Education programs.

In 2004 Dr. Trudie Kibbe Reed became President. In 2005 she launched the International Institute for Civic Participation and Social Responsibility to help train future civic, professional, and political leaders and as a tribute to Founder Mary McLeod Bethune's successful engagement in all three areas. Bethune-Cookman institution achieved University status in early 2007 under Dr. Reed's administration.

The current enrollment of Bethune-Cookman University is approximately 3,600 undergraduates. Majority of the students are from Florida and are of African American descent. Since 1943, the university has graduated over 13,200 students and offers 37 programs, including a Master's of Science in Transformative Leadership.

Sources:

Rackham Holt, *Mary McLeod Bethune; A Biography* (Garden City, New York: Doubleday & Company, Inc., 1964); Bethune-Cookman University, <http://www.cookman.edu/index.html> (official website)

The Mission & Vision of Bethune-Cookman University

Mission

Founded by Dr. Mary McLeod Bethune in 1904, Bethune-Cookman University is an historically Black, United Methodist Church-related university offering baccalaureate and master's degrees. The mission is to serve in the Christian tradition the diverse educational, social, and cultural needs of its students and to develop in them the desire and capacity for continuous intellectual and professional growth, leadership and service to others. The University has deep roots in the history of America and continues to provide services to the broader community through a focus on service learning and civic engagement.

Bethune-Cookman University accomplishes its mission by providing quality instruction in an intellectually stimulating environment that nurtures the mind (intellect), the heart (transformative leadership) and the hand (service learning) according to our founder's motto and the institution's seal.

Revised, March 14, 2008, by the Board of Trustees of Bethune-Cookman University.

The President's Vision

"To bring an institutional identity to Bethune-Cookman College for the 21st century by becoming a top post-secondary institution in the region and nation and continuing the legacy of Mary McLeod Bethune, our founder, by allowing students the opportunity to expand their knowledge and skills through learning, research, and service opportunities valued by students, parents, and communities, and to maintain an accountability system that measures institutional progress towards our mission."

Dr. Trudie Kibbe Reed (2004)

2005-2010 University Strategic Goals

Goal #1. *Enhance academic excellence.*

Priority: To enhance academic excellence so that students who graduate from Bethune-Cookman University will have the complex cognitive skills; practical knowledge and competency; an appreciation of human differences; and transformative leadership, an integrated sense of identity and civic responsibility, that prepares them to work and live successfully within a multicultural and global community.

Goal #2. *Increase the endowment and fundraising.*

Priority: To develop and implement programs and services plan of action that will strengthen the financial stability, increase endowment growth, and provide effective marketing and brand identification for the university.

Goal #3. *Facilitate an effective learning community.*

Priority: To provide a nurturing campus environment that empowers students to succeed in university by fostering an effective learning community built on the rich tradition and legacy of Dr. Bethune, which is inclusive of academic excellence, service learning, spiritual and leadership development and critical thinking skills that promotes reflection and dialogue regarding ways to improve society.

Goal #4. *Create and facilitate an international institute for Civic Participation and Social Responsibility.*

Priority: Reconnect the college's Vision to a core value from the legacy of the college founder, Dr. Mary McLeod Bethune, to provide an institutional identity for Bethune-Cookman University in the 21st Century.

Goal #5. *Increase continuing education opportunities of excellence.*

Priority: Increase non-traditional, degree-seeking student access and enrollment at satellite campus programs. Implement curricula for accelerated programs, with on-line components, to attract adult learners and non-traditional students. Initiate Accelerated Degree program and continuing and professional studies in line with feasibility studies. Develop programs in graduate and professional studies.

Goal #6. *Ensure financial stability, growth, and administrative practices.*

Priority: Strengthen and ensure the university's financial and administrative integrity, efficiency and operating processes. Assess financial management program of the university is on track and consistent with, not only our priorities, but also accepted best practice measures of fiscal responsibility and accountability.

List of Majors by CIP Codes, Division & Degree Offered 2009-2010

Source: Office of Academic Affair

School of Arts & Humanities	Degree	CIP Code
English	B.A.	23.0101
Mass Communications	B.A.	9.0102
Music Technology	B.A.	50.0913
Music Performance	B.A.	50.0901
Religion and Philosophy	B.A.	38.9999
Speech Communication	B.A.	9.0101
School of Business	Degree	CIP Code
Accounting	B.S.	52.0301
Business Administration	B.S.	52.0201
Hospitality Management	B.S.	52.0904
International Business	B.S.	52.1101
School of Education	Degree	CIP Code
Elementary Education K-6/ESOL Endorsement	B.S.	13.1202
Exceptional Student Education K-12/ESOL Endorsement	B.S.	13.1011
Physical Education K-12	B.S.	13.1314
Physical Education/Recreation	B.S.	31.0101
Educational Studies	B.S.	13.0101
Biology Education 6-12	B.S.	13.1322
Business Education 6-12	B.S.	13.1303
English Education 6-12/ESOL Endorsement	B.A.	13.1305
Music Education K-12	B.A.	13.1312
Social Science Education 6-12	B.A.	13.1318
School of Nursing	Degree	CIP Code
Nursing	B.S.	51.1601
School of Science/Engineering & Mathematics	Degree	CIP Code
Biology	B.S.	26.0101
Chemistry	B.S.	40.0501
Computer Information Systems	B.S.	11.0401
Computer Science	B.S.	11.0701
Computer Engineering	B.S.	14.0901
Mathematics	B.S.	27.0101
Integrated Environmental Science	B.S.	3.0104
School of Social Science	Degree	CIP Code
Criminal Justice	B.S.	43.0199
Gerontology	B.S.	30.1101
International Studies/International Affairs	B.S.	45.0901
Political Science	B.S.	45.1001
Psychology	B.S.	42.0101
Sociology	B.S.	45.1101
History	B.S.	54.0101
School of Graduate Program	Degree	CIP Code
Transformative Leadership	M.S.	52.1003



*Bethune-Cookman University
Administration*

(Picture shown of Daytona Normal and Industrial Institute during meal preparation)

The Paradigm of Bethune-Cookman University

Core Values

Bethune-Cookman University employees draw motivation and direction from six strongly held principles.

These principles guide the manner in which we treat each other and those we serve.

- *Christian Mission.* We exist to serve the needs of our communities and incorporate Christian values at every level of service.
- *High ethical standards.* We conduct our business with integrity, honesty and fairness. As responsible stewards, we use our financial resources wisely by choosing business practices which are cost-effective, productive and result in a fair return on investment.
- *Quality and service excellence.* We strive to meet or exceed both the service standards of the education industry and the expectations of the students we serve. We measure our success through continuous surveying of student satisfaction.
- *Compassion.* We are sensitive to the needs of the individuals and families we serve and meet their needs with kindness and empathy.
- *Focus on Community.* We commit time, talent and financial support to involve and educate our neighbors in the principles of civic service and social responsibility. Examples are the Town Hall forums held year around and meetings with the stakeholder groups, i.e. church, community, businesses, political leaders, alumni, parents, etc.
- *Cultural diversity.* We value the diversity of our students, employees, business colleagues and visitors and treat them with kindness and respect regardless of their background, race, religion, or culture.

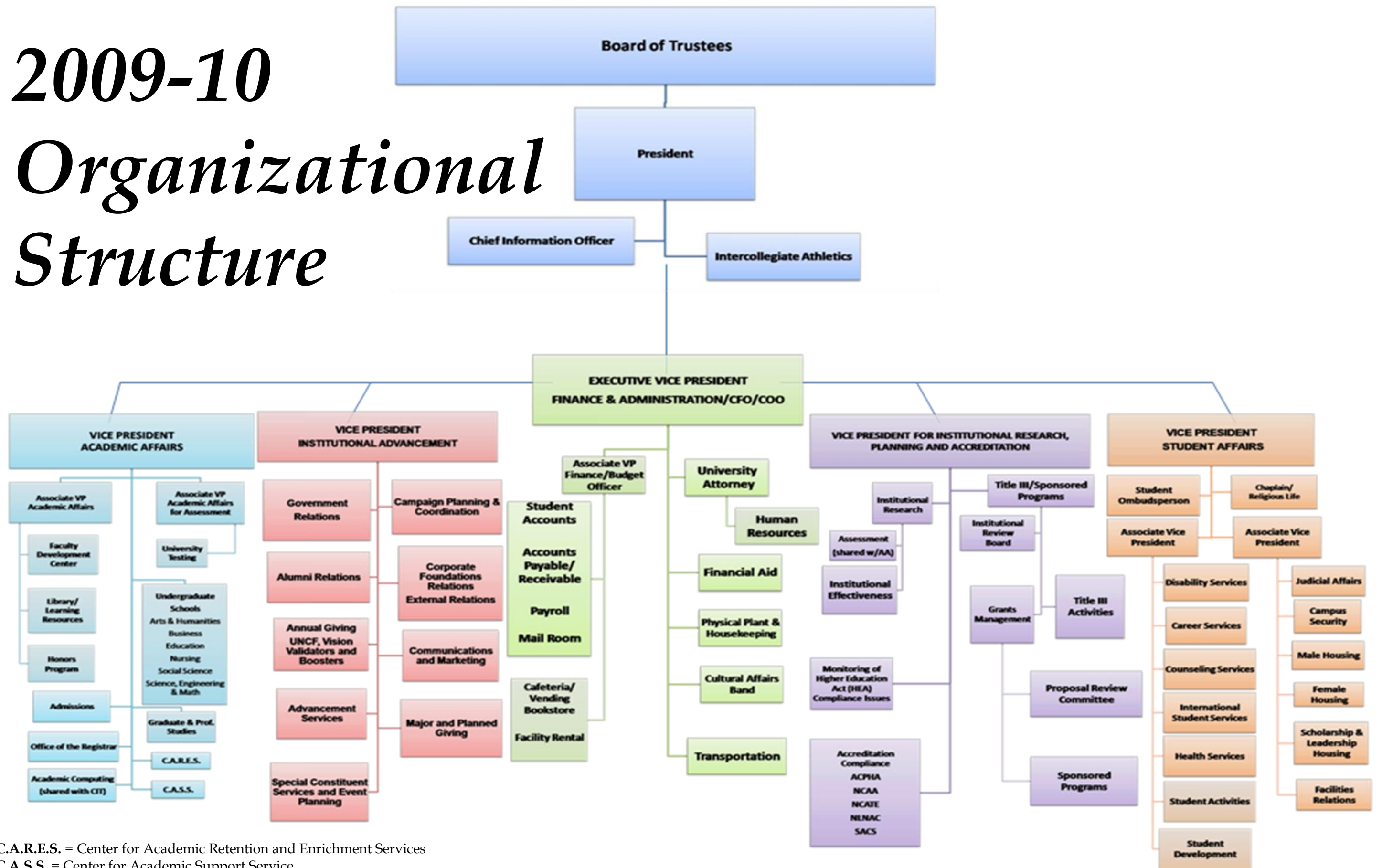
Points of Integrity

From administrators to service staff, to outside contracted services, regardless of our personal responsibilities, everyone associated with Bethune-Cookman University is a representative of the total University and expected to honor our points of integrity.

- *Fulfill Regulatory Responsibilities* – Comply with all applicable federal, state, and local laws and regulations, being guided by the basic principles of honesty and fairness.
- *Provide Excellent Customer Service* – Deliver necessary services in a compassionate, respectful and ethical manner without regard to race, creed, color, religion, national origin, gender or disability; treat customers with dignity and respect at all times.
- *Maintain Accurate Records* – Ensure accurate and reliable individual and institutional records; and prepare reports honestly and in accordance with established finance and accounting procedures.
- *Ensure Appropriate Official Contacts* – Maintain contacts with, federal, state, local government and accrediting agency officials and personnel in a professional manner, affirming the high integrity of the university.
- *Deliver Financially Responsible Service* – Maintain openness, honesty and accuracy in billing for services. Provide students with understandable explanations of services provided; hold responsible parties financially accountable only for services rendered; and seek to resolve conflicts in a fair and equitable manner. Follow sound accountability principles and ethically centered leadership practices.
- *Advertise and Communicate Honestly* – Carry out our institution’s public and commercial communications in a manner consistent with our mission; and ensure that our marketing and advertising statements are accurate and sensitive to community culture without false or misleading statements.
- *Strive for Fairness in All Activities* – Continually examine our practices to identify, avoid or eliminate potential conflicts of interest.
- *Ensure Privacy* – Maintain the privacy of our students’ and our employees’ information.
- *Adhere and Fulfill Standards of Excellence* – Comply and meet with all required standards and regulations governed by federal, state, and regional accrediting bodies.

2009-10

Organizational Structure



C.A.R.E.S. = Center for Academic Retention and Enrichment Services
 C.A.S.S. = Center for Academic Support Service

The Board of Trustees

Board of Trustees Officers

Dr. Larry Handfield, Esquire, Chairperson
Dr. Lee Rhyant, 1st Vice Chairperson
Bishop Timothy Whitaker, 2nd Vice Chairperson
Dr. Irving J. Matthews, 3rd Vice Chairperson
Mr. Philip Roughton, Secretary
Mr. John Schroepfer, Finance Chairperson
Rev. John Harrington, Institutional Advancement Chairperson
Dr. William Hogan, II, Educational Policies Chairperson
Rev. Dr. Kevin James, Sr., Nominations and Governance Chairperson
Mr. Johnny McCray, Esquire, Student Life Chairperson
Mr. Audley Coakley, At-Large
Dr. Joyce Cusack, At-Large
Rev. Dr. Randolph Bracy, Jr., At-Large
Rev. Dr. Robert Gibbs, At-Large
Dr. Trudie Kibbe Reed, Ex-Officio

Mr. Berrece Andrews Jr.
Mr. Jacob Bryan, IV
Mrs. Lois Fry
Dr. Margaret McPhillips
Mr. Joe Petrock
Ms. Evelyn B. Walker
Rev. Dr. Thomas S. Yow, III
Mrs. Brenda Schofield

Spring 2010 Membership

Rev. Dr. William S. Barnes
Judge Prince Cartwright
Mrs. Dorothea Henderson
Mr. Ben Novello
Mrs. Alexis Pugh
Mrs. Linda F. Wells, Esquire
Dr. Patrick David Roberts

Mr. Byrd Bonner, Esquire
Rev. Dr. Ronald Durham
Mr. Michael P. Johnson
Mrs. Joyce Odongo
Mrs. Madeline Scales-Taylor
Mr. Etienna R. "ET" Winzer
Mrs. Kathleen C. Rydell
Rev. Dr. Eugene Zimmerman

University Attorney
Cobb & Cole

The Board of Trustees

Ex-Officio Membership

Ms. Chandra Fleet, SGA President
President Trudie Kibbe Reed
Ms. Sharon Luther
Rev. Dr. Wayne D. Wiatt

Trustee Emeriti

Mr. Lee E. Rhyant
Mr. Arthur Brinson
Dr. Nathaniel Davis
Mr. James Gregg
Bishop James Knox
Dr. J. Stanley Marshall
Mrs. Jacqueline Mongal
Mrs. Brenda Schofield

Rev. Philip H. Roughton
Mr. Matthew Brown
Mr. Charles Courtoy
Mr. David Hochstetler
Mr. F. Michael Kyle
Dr. Mary Massey
Dr. Patrick David Roberts
Rev. Hilton O. Smith

Mr. Robert Billingslea
Mr. Robert Carter
Dr. M. McCoy Gibbs
Dr. Wendell P. Holmes
Dr. L. Gale Lemerand
Dr. LaDoris McClaney
Mrs. Kathleen Rydell
Mr. William G. Talley Jr.

President of Bethune-Cookman University

Dr. Mary McLeod Bethune founded a normal and industrial school for girls that she transformed into a premier co-educational liberal arts college. The first woman to serve as president after Dr. Bethune, Dr. Trudie Kibbe Reed, turned the college into a university – now known as the “Great” Bethune-Cookman University.

Dr. Trudie Kibbe Reed assumed the presidency of then-Bethune-Cookman College on August 16, 2004 after a successful career in higher education as both a college president and a high-ranking administrator within The United Methodist Church. She is a student-centered leader, educator, taskmaster, administrator, visionary, transformative leader, public speaker, motivator, and fund-raiser.

Dr. Reed pulls from a wealth of experience that includes two presidencies at the college/university level, as well as a member of the General Secretariat of a women’s advocacy organization, and over 18 years in various top-tier rankings of The United Methodist Church administration. Dr. Reed’s leadership skills are widely recognized and utilized in varied arenas. She was elected to the board of the National Association of Independent Colleges and Universities, and U.S. Senator Bill Nelson selected her to serve on Florida’s Federal Judicial Nominating Commission. In 2008, she was elected as a member of the United Methodist General Board of Higher Education and Ministry. In 2006, she was selected by the Governor of Florida to serve a three-year term on the state’s Commission on Volunteerism and Community Service. Appointed by the US Secretary of State Arne Duncan, she serves on the HBCU Capital Financing Advisory Board and has served the White House Commission on HBCUs under appointment by President Bill Clinton.

Education: Dr. Reed received a B.A. degree in Sociology and a Master’s degree in social work from the University of Texas at Austin. She earned an M.A. degree and Doctorate degree from Columbia University in the area of adult and higher education. Again, following in the footsteps of Dr. Mary McLeod Bethune, Dr. Reed received an Honorary Doctorate for her humanitarian work from Rollins College.

Career Highlights: Dr. Reed served 18 years as a senior level administrator with The United Methodist Church. At age 28, she became the youngest CEO elected to the General Commission on the Status and Role of Women. When later serving as Associate General Secretary for the General Council on Ministries, she developed educational programs for eight national agencies, seminaries, colleges, and universities. She also coordinated the denomination’s first national initiative in prison ministry, deaf ministry, and ministries by, with, and for older adults. She drafted legislation and conceptualized a church-wide study that developed into a major quadrennial emphasis for the denomination: *“Strengthening the Black Church for the 21st Century.”*

Vision for Bethune-Cookman University: Dr. Reed’s goals for Bethune-Cookman University include enhancing academic excellence, developing distance education programs, and reinvigorating the legacy of Dr. Mary McLeod Bethune for the 21st century.



As an elementary school student, Dr. Reed became enamored with Bethune-Cookman after playing the role of the school’s founder, Dr. Mary McLeod Bethune, in a school play. Dr. Reed states: *“I never thought I would walk in the footprints of such a remarkable leader who served as my role model during my formative years.”* Dr. Reed reminds students to sustain the legacy of faith, scholarship and service by giving back to society and engaging in civic leadership opportunities. Dr. Reed’s vision for preserving Dr. Bethune’s legacy includes the development of an International Institute for Civic Participation and Social Responsibility.

Source: Bethune-Cookman University, <http://www.cookman.edu/index.html> (official website)

The President & 2009 Officers of the University

Dr. Trudie Kibbe Reed

President

Mr. E. Dean Montgomery

Executive Vice President Finance/Chief Operating Officer

Dr. Sarah Williams

Vice President of Academic Affairs

Dr. Ray Shackelford

Vice President of Student Affairs

Mrs. Shirley Range

Vice President for Institutional Advancement

Mr. Franklin Patterson

Chief Information Officer

Dr. Willis Walter Jr.

Vice President, Institutional Research, Planning and Accreditation

Fall 2009 Administration & Directorship

Associate Vice President for Finance and Budget/Director of Accounting Services

Melissa Peters

Director of Advancement Service

Valerie Powell

Director of Athletics

Lynn Thompson

Director of Career Placement & Counseling Services

Davita Bonner

Director of Academic Retention and Enrichment Services

Joan Thompson

Director of Academic Support Services

Joyce Ellenwood

Director of Faculty Development Center

Deborah Freckleton, Ph.D.

Director of Admissions

Aixa Melendez

Director of Financial Aid

Joseph L. Coleman

Director of Human Resources

Cynthia Hawkins

Director of Library/LRC

Tasha Youmans

Director of Physical Plant/Maintenance

Ervin Ross

Director of Religious Life

Rev. Walter Monroe

Director of Student Health Services

Colleen O'Brien, RN

Director of Transportation

Rev. Raymond Carswell

Director of Campus Security

Chief Melvin Williams

Registrar

Annie Redd

2009-2010 Department Heads for Degree-Granting Programs

SCHOOL OF ARTS AND HUMANITIES

English
Mass Communications
Music
Religion and Philosophy
Speech Communication & Theatre Arts
Modern Languages

SCHOOL OF BUSINESS

Accounting
Business Administration
Hospitality Management
International Business

SCHOOL OF EDUCATION

Biology Education
Business Education
Educational Studies
Elementary Education
English Education
Exceptional Student Education
Music Education
Physical Education/Recreation

SCHOOL OF GRADUATE and PROFESSIONAL STUDIES

Leadership Studies

SCHOOL OF NURSING

SCHOOL OF SCIENCE, ENGINEERING AND MATHEMATICS

Biology
Chemistry
Computer Science/Computer Information Systems/Computer Engineering
Mathematics
Physics

SCHOOL OF SOCIAL SCIENCES

Criminal Justice
Gerontology
History
International Studies
Political Science
Sociology
Psychology

Edmondson Asgill, Ph.D.
Camesha Manzueta, Ed. D.
Kimberly Haynes, Ph.D.
Alice Wood, Ph.D.
Kekeli K. Nuviadenu, Ph.D.
Connie Curtis, Ph.D.

David Caslan, Ph.D.
Gina Beckles, Ph.D.
Graham Bowcher, MBA
Aysar Sussan, DBA

Kenneth Lindberg, Ph.D.
Earl Burney, Jr., ABD
Maureen Davin, Ph.D.
Joanne Robinson, Ph.D.
Edmondson Asgill, Ph.D.
Janice Jacob, Ph.D.
Lisa Lawrence, MS
Walter Fordham, Ph.D.

Meta Harris, Ph.D.

Paula Pritchard, Ph.D.

Kenneth Lindberg, Ph.D.
Thomas O. Richardson, Ph.D.
Morrison Obeng, Ph.D.
John Douglass, Jr. MA
Sunil David, Ph.D.

Sampson I. Oli, Ph.D.
John Ukawuilulu, Ph.D.
Jeannette Ford, Ed.D.
Cheryl Grimes Long, MPA
A. Smart Uhakheme, Ph.D.
Janice Allen-Kelsey, Ph.D.
Yvonne Mahy, Ph.D.



*Bethune-Cookman
University Students*

(Picture shown of Daytona Educational and Industrial Training School for Negro Girls)

Student Enrollment (Fall 2009)

New Students	Male	Female	Total
Number of Applications Submitted	1,901	3,287	5,188
Number of Admissions	1,235	2,352	3,587
Number of Admitted	477	649	1126

First-Time Freshman	Headcount	Percentage	New Transfer
Male	431	42%	46
Female	596	58%	53
TOTAL	1,027	100%	99

Ethnicity	Male	Female	Total	Percentage
Black (Non Hispanic)	1331	2047	3378	94%
White (Non-Hispanic)	27	26	53	1%
Asian/Pacific Islander	3	4	7	<1%
Hispanic	39	20	59	2%
American Indian/Alaskan	1	5	6	<1%
Non-Resident Alien*	27	45	72	2%
Other (2 or more Ethnicities)	7	12	19	1%
Headcount	1445	2169	3614	100%

Student Enrollment (Fall 2009)

Residence	Male	Female	Total	Percentage
In State (Florida)	1,005 (40%)	1,526 (60%)	2,531	70%
Out-Of-State (including U.S. Territories)	407 (41%)	589 (59%)	996	28%
International	23 (34%)	44 (66%)	67	2%
Undergraduate Total	1,435 (40%)	2,159 (60%)	3,594	100%

Undergraduate Headcount	Male	Female	Total	Percentage
Full-Time	1,368	2,081	3,449	96%
Part-Time	67	78	145	4%
Full-Time Equivalent	1,390	2,107	3,497	

Area of Intended Study by School	Male	Female	Total	Percentage
Arts & Humanities	199	237	436	13%
Business	385	283	668	18%
Education	203	285	488	13%
Nursing	52	483	535	15%
Science, Engineering, & Math	213	249	462	13%
Social Sciences	289	557	846	23%
Undecided	94	65	159	4%
Undergraduate Total	1,435	2,159	3,594	100%
Graduate Program Total	-	-	20	1%

Student Headcount by School, Department, Classification and Gender (Fall 2009)

School/Department	First-Time Freshman		Returning Freshman		Sophomore		Junior		Senior		Total	
	Female	Male	Female	Male	Female	Male	Female	Male	Female	Male		
School of Arts & Humanities												
English	10	0	2	1	2	1	4	3	2	1	26	
Mass Communications	46	15	23	28	41	28	39	28	28	17	293	
Music	2	20	3	10	8	10	5	12	2	12	84	
Religion & Philosophy	0	2	0	1	0	1	0	4	0	3	11	
Speech Communication	3	0	3	1	5	0	5	0	4	1	22	
Total	61	37	31	41	56	40	53	47	36	34	436	
School of Business												
Accounting	15	12	3	4	10	8	12	11	13	9	97	
Business Admin	41	86	20	40	32	58	31	41	32	43	424	
Hospitality Mgmt	10	9	6	7	11	11	23	12	8	7	104	
International Bus	1	8	1	4	3	3	7	9	4	3	43	
Total	67	115	30	55	56	80	73	73	57	62	668	
School of Education												
Biology Education 6-12	1	1	2	0	1	1	0	0	1	0	7	
Business Education 6-12	0	2	1	0	0	0	3	0	0	0	6	
Educational Studies	3	1	0	0	0	0	4	0	12	4	24	
Elementary Ed. K-6	33	7	17	7	34	5	32	7	29	4	175	
English Education 6-12	7	0	5	0	2	1	3	1	2	1	22	
Exceptional Ed. K-12	6	0	7	1	11	3	8	0	5	1	42	
Music Education K-12	4	23	3	14	4	10	4	11	8	15	18	
Physical Ed. K-12	4	12	0	4	2	6	2	7	4	11	52	
Physical Ed./Recreation	0	8	0	4	5	10	4	8	5	10	54	
Social Science Education	3	1	1	0	3	1	0	0	0	1	10	
Total	61	55	36	30	62	37	60	34	66	47	488	

Student Headcount by School, Department, Classification and Gender (Fall 2009)

School/Department	First-Time Freshman		Returning Freshman		Sophomore		Junior		Senior		Total
	Female	Male	Female	Male	Female	Male	Female	Male	Female	Male	
School of Nursing	142	20	64	4	76	5	81	5	120	18	
Total											535
School of Science, Engineering, & Mathematics											
Biology	72	25	32	11	49	17	21	4	14	10	255
Chemistry	5	4	2	0	14	3	3	2	2	1	36
Computer Engineering	2	26	2	13	5	13	0	8	0	4	73
Computer Info System	2	8	3	1	2	5	0	5	1	4	31
Computer Science	3	12	1	4	0	3	1	1	0	2	27
Mathematics	3	6	1	4	3	1	2	3	1	2	26
Pre-Engineering	0	0	0	1	1	4	1	3	0	1	11
Physics	0	0	0	1	0	0	0	0	0	0	1
Integrated Environmental Science	0	1	1	0	0	0	0	0	0	0	2
Total	87	82	42	35	74	46	28	26	18	24	462
School of Social Science											
Criminal Justice	66	63	41	41	46	30	56	29	23	18	413
Gerontology	0	0	0	0	1	3	2	-	2	8	16
History	3	1	2	0	8	4	5	2	2	4	31
International Std	4	0	0	0	4	2	6	5	1	1	23
Political Science	7	6	4	1	10	6	6	3	2	2	47
Psychology	63	15	28	6	46	10	44	10	21	6	249
Sociology	7	1	7	3	14	4	12	3	8	8	67
Total	150	86	82	51	129	59	131	52	65	41	846
Undeclared Total	33	56	18	21	9	11	2	5	3	1	159

Student Headcount by School and Department

School/Departments	2005	2006	2007	2008	2009
School of Arts & Humanities					
English	20	15	19	24	26
English Ed 6-12*	12	18	10	22	22
Mass Communications	225	266	125	277	293
Mod Languages**	1	0	2	0	0
Music	49	53	224	99	84
Music Ed K-12*	102	85	95	80	18
Religion & Philosophy	13	9	9	12	11
Speech Com/Theatre	19	21	53	50	22
Total	441	467	412	564	436
School of Business					
Accounting	92	101	78	105	97
Business Admin	394	465	495	479	424
Business Ed. 6-12*	11	11	7	10	0
Hospitality Mgmt	57	56	45	107	104
International Bus	34	35	26	40	43
Total	598	668	651	741	668
School of Education					
Educational Studies	6	25	20	20	24
Elementary Ed. K-6	239	203	165	206	175
Exceptional Ed. K-12	25	24	10	31	42
Physical Ed.	115	108	45	121	52
Total	385	360	240	378	488
School of Nursing Total	370	337	414	471	535

* Denotes program has been moved and included in 2009 totals for the School of Education.

** Denotes program is no longer available.

Student Headcount by School and Department

School/Department	2005	2006	2007	2008	2009
School of Science, Engineering & Math					
Biology	211	211	341	265	255
Biology Ed. 6-12*	7	5	5	5	7
Chemistry	26	35	1	27	36
Chemistry Ed. 6-12*	0	0	9	0	0
Clinical Lab Science	0	11	1	1	0
Computer Engineering	35	40	1	69	73
Computer Info System	47	34	28	25	31
Computer Science	47	37	42	34	27
Mathematics	13	12	63	21	26
Pre-Engineering	32	47	65	28	11
Physics	6	3	20	3	1
Physics Ed. 6-12*	1	0	3	0	0
Total	425	435	579	478	462
School of Social Sciences					
Criminal Justice	320	281	241	380	413
Gerontology	17	25	1	20	16
History	27	38	54	42	31
International Studies	12	14	4	20	23
Political Science	27	33	31	48	47
Psychology	200	196	160	229	249
Social Studies Ed. 6-12*	7	7	24	9	10
Sociology	50	52	26	85	67
Total	660	646	541	833	846
Undeclared	206	180	557	129	159
Undergraduate Total	3085	3093	3394	3598	3594
School of Graduate Studies	0	0	39	35	20
Total	3085	3093	3433	3598	3614

Undergraduate Enrollment by Ethnicity and Gender (2005 – 2009)

Ethnicity	Fall 2005			Fall 2006			Fall 2007			Fall 2008			Fall 2009		
	Male	Female	Total	Male	Female	Total	Male	Female	Total	Male	Female	Total	Male	Female	Total
Black (Non Hispanic)	1115	1672	2827 91%	1181	1672	2807 91%	1303	1852	3155 93%	1292	2001	3293 92%	1331	2047	3378 94%
White (Non Hispanic)	19	26	45 1%	22	24	53 2%	23	23	46 1%	28	20	48 1%	27	26	53 1%
Asian, Pacific Islander	0	5	5 --	2	4	6 --	2	5	7 --	3	3	6 --	30	49	79 --
Hispanic	30	11	41 1%	37	15	52 2%	43	23	66 2%	41	25	66 2%	20	39	59 2%
American, Indian Alaskan	2	7	9 --	3	7	10 --	2	7	9 --	2	3	11 --	1	5	6 --
Non-Resident Alien*	40	67	109 4%	41	62	103 3%	8	10	18 1%	31	59	90 3%	--	--	-- 2%
Other (2 or More Ethnicities)	22	32	54 2%	23	46	69 2%	29	64	93 3%	30	54	84 2%	7	12	19 1%
Total	1270	1820	3090	1309	1784	3093	1410	1984	3394	1427	2171	3598	1416	2178	3594

Source: Registrar's Office/ Center for Information Technology

Undergraduate Enrollment by County

County	Fall 2006	Fall 2007	Fall 2008	Fall 2008	Fall 2009
Alachua	43	51	58	58	42
Baker	0	0	0	0	1
Bay	3	0	0	0	1
Bradford	2	1	2	2	1
Brevard	44	50	53	53	53
Broward	236	250	313	313	325
Calhoun	0	0	0	0	0
Charlotte	2	3	1	1	5
Citrus	0	1	1	1	1
Clay	12	29	18	18	27
Collier	3	7	4	4	6
Columbia	7	8	8	8	6
Dade	317	372	433	433	470
Desoto	5	4	4	4	2
Dixie	75	5	3	3	2
Duval	191	222	241	241	224
Escambia	15	19	17	17	17
Flagler	22	25	26	26	27
Franklin	3	3	1	1	1
Gadsden	2	2	3	3	6
Gilchrist	0	0	0	0	1
Glades	1	0	2	2	2
Gulf	0	0	1	1	0
Hamilton	0	3	5	5	4
Hardee	0	1	0	0	0
Hendry	5	3	3	3	2
Hernando	1	2	3	3	3
Highlands	3	5	7	7	6
Hillsborough	113	101	106	106	127
Holmes	0	0	0	0	0
Indian River	26	25	24	24	21
Jackson	0	3	0	0	0
Jefferson	0	0	3	3	4
Lafayette	0	0	0	0	1
Lake	21	26	35	35	30
Lee	21	25	29	29	23
Leon	12	11	8	8	6
Levy	2	3	4	4	6

Undergraduate Enrollment by County

County	Fall 2006	Fall 2007	Fall 2008	Fall 2008	Fall 2009
Liberty	0	0	0	0	0
Madison	0	0	1	1	0
Manatee	13	17	12	12	11
Marion	23	31	31	31	28
Martin	4	5	4	4	5
Monroe	1	1	0	0	0
Nassau	9	6	4	4	3
Okaloosa	0	2	1	1	2
Okeechobee	3	2	0	0	0
Orange	182	141	169	214	222
Osceola	6	18	23	25	24
Palm Beach	173	164	154	150	155
Pasco	6	4	4	7	11
Pinellas	50	46	45	57	52
Polk	57	69	71	69	81
Putnam	25	29	22	23	19
Santa Rosa	6	0	1	2	2
Sarasota	7	12	8	12	16
Seminole	36	26	42	42	32
St. John's	11	15	17	10	12
St. Lucie	25	26	36	41	42
Sumter	9	10	6	6	6
Suwannee	0	1	4	5	4
Taylor	0	0	0	0	0
Union	0	3	4	3	4
Volusia	311	325	310	295	278
Wakulla	0	0	0	0	0
Walton	0	0	0	0	1
Washington	0	0	0	0	3
County Unknown	-	-	-	-	65
Total	1846	2018	2059	2240	2531

Undergraduate Enrollment by U.S. States & Territories

State	2005	2006	2007	2008	2009
Alabama	9	7	10	14	8
Alaska	3	3	0	0	0
Arizona	4	2	2	1	0
Arkansas	5	5	6	5	2
California	60	44	49	54	51
Colorado	10	8	9	7	7
Connecticut	11	12	14	12	13
Delaware	3	5	6	5	4
Dist. of Columbia	14	16	18	27	23
Florida	2018	2059	2301	2430	2531
Georgia	295	296	301	305	307
Hawaii	1	0	0	0	0
Idaho	1	1	0	0	0
Illinois	40	40	38	43	40
Indiana	6	7	12	13	11
Iowa	0	0	0	0	0
Kansas	3	3	4	3	1
Kentucky	4	1	2	0	1
Louisiana	14	9	6	8	5
Maine	0	0	0	1	0
Maryland	68	50	57	71	62
Massachusetts	13	14	16	19	14
Michigan	27	41	37	25	28
Minnesota	6	2	4	4	3
Mississippi	2	2	1	2	2
Missouri	3	4	5	7	7
Montana	0	0	0	0	0
Nebraska	1	0	0	0	0
Nevada	2	2	0	1	1
New Hampshire	1	1	1	1	0
New Jersey	28	22	34	43	38
New Mexico	1	1	2	2	1
New York	51	61	59	52	62
North Carolina	7	11	25	26	31
North Dakota	0	0	0	0	0
Ohio	18	19	17	16	16
Oklahoma	0	1	1	0	0

Undergraduate Enrollment by U.S. States & Territories

State	2005	2006	2007	2008	2009
Oregon	1	1	0	2	1
Pennsylvania	26	29	45	37	30
Puerto Rico	-	-	-	-	10
Rhode Island	2	2	2	1	0
South Carolina	65	72	108	102	94
South Dakota	0	1	0	1	0
Tennessee	8	7	8	11	16
Texas	24	25	29	28	25
Utah	0	0	0	0	0
Vermont	0	0	1	1	1
Virgin Islands	-	-	-	-	22
Virginia	44	41	45	46	36
Washington	26	20	19	20	12
West Virginia	0	0	1	2	1
Wisconsin	4	4	6	11	10
Wyoming	0	0	0	0	0
Total	2981	2990	3300	3458	3527

Student Enrollment by Religious Preference

Religion/Denomination	Fall 2005	Fall 2006	Fall 2007	Fall 2008	Fall 2009
Baptist	1145	1127	1232	1291	1317
Christian	0	0	0	449	413
Episcopalian	48	44	44	33	27
Jehovah Witness	0	0	0	3	156
Lutheran	7	8	11	14	11
Methodist	249	242	213	214	180
Muslim	0	0	0	10	9
Non-Christian	10	11	55	34	936
Other-Christian	1080	1203	1407	1165	4
Pentecostal	0	0	0	108	120
Presbyterian	22	14	20	18	20
Roman Catholic	126	130	128	122	107
Seventh Day Adventist	0	0	0	17	16
Unknown	222	158	122	0	263
United Church of Christ	181	156	162	155	35
Total	3090	3093	3394	3633	3614

Undergraduate Degrees Conferred (2004 -2009)

School/Departments	2004-2005	2005-2006	2006-2007	2007-2008	2008-2009
Liberal Studies Total¹	1	1	--	--	--
School of Arts & Humanities					
English	4	5	2	3	4
English Ed. 6-12	0	1	0	2	1
Mass Communications	11	19	12	22	34
Modern Languages ²	2	2	--	--	--
Music	1	9	9	9	15
Music Ed. K-12	4	5	7	3	5
Religion/Philosophy	2	3	3	3	4
Speech Comm.	--	--	3	4	3
Speech Com & Theatre Arts	3	6	1	2	--
Total Degrees	27	50	37	48	66
School of Business					
Accounting	12	10	13	18	22
Business Administration	46	36	27	60	67
Business Ed. 6-12	1	1	--	--	--
Hospitality Mgmt.	8	8	6	12	13
International Business	3	9	5	7	4
Total Degrees	70	64	51	97	106
School of Education					
Educational Studies	16	32	43	29	28
Elementary Ed. K-6	14	16	14	14	21
Exceptional Ed. K-12	8	3	3	3	4
Physical Ed. K-12	11	10	2	1	5
Physical Ed./Recreation	0	0	15	12	14
Total Degrees	49	61	77	59	72
School of Nursing Total Degrees	22	25	26	40	19

Undergraduate Degrees Conferred (2004 -2009)

School/Department	2004-2005	2005-2006	2006-2007	2007-2008	2008-2009
School of Science, Engineering, & Mathematics					
Biology	9	6	13	13	19
Biology Ed. 6-12	1	0	0	1	0
Chemistry	4	2	1	4	3
Clinical Lab Science ³	5	6	6	1	1
Computer Engineering	--	--	2	2	4
Computer Info Systems	5	2	5	2	3
Computer Science	0	7	2	2	3
Mathematics	9	4	2	3	2
Mathematics Ed. 6-12	5	3	0	0	0
Physics	0	1	2	0	0
Total Degrees	38	31	33	28	35
School of Social Sciences					
Criminal Justice	41	37	29	43	64
Gerontology	7	10	13	6	13
History	12	5	10	3	0
International Studies	2	4	3	5	1
Political Science	5	6	4	7	12
Psychology	34	19	40	31	37
Sociology	9	16	13	17	29
Social Studies Ed. 6-12	1	1	1	0	0
Total Degrees	111	98	113	112	156

Undergraduate Degrees Conferred (2004-2009)

School/Department	2004-2005	2005-2006	2006-2007	2007-2008	2008-2009
Account. /Hospitality Mgt.	-	1	-	-	-
Bus. Marketing/Accounting	-	-	-	1	-
Criminal Just/Sociology	-	1	-	-	1
Computer Sci./Physics	1	-	-	1	-
Hospitality/Mass Comm.	-	-	-	-	-
Int'l Studies/Political Sci.	1	-	-	-	-
Mass Comm./Modern Lang	1	-	6	-	-
Music/Music Ed.	-	-	-	-	-
Psychology/History	-	-	-	-	-
Sociology/Criminal Justice	1	-	-	-	-
Sociology/Gerontology	-	-	-	-	-
Sociology/German	-	-	-	-	-
Total Degrees	322	332	343	384	459

¹ Discontinued as a degree program in 2005

² Discontinued as a degree program in 2004

³ Discontinued as a degree program in 2006

***Student Right to Know Cohort Retention and Graduation Rates
Fall 2001 - 2009***

Year Entered	Number in Class	Returned For					Number & Percentage Graduated of the Original Class After				2008-09 Total
		2nd Yr	3rd Yr	4th Yr	5th Yr	6th Yr	3rd Yrs	4th Yrs	5th Yrs	6th Yrs	
2001	720 100%	492 68%	444 61%	304 42%	185 25%	89 12%	27 4%	92 12%	81 11%	49 11%	249 35%
2002	620 100%	496 80%	383 62%	316 51%	195 31%	84 14%	25 4%	104 17%	82 13%	35 6%	246 40%
2003	832 100%	597 72%	472 57%	394 47%	255 31%	125 15%	29 4%	108 13%	112 13%	76 9%	325 39%
2004	841 100%	598 71%	459 55%	368 44%	250 30%	82 10%	6 1%	117 14%	129 15%	*	
2005	949 100%	626 66%	470 50%	423 45%	245 26%	*	17 2%	123 13%	*	*	
2006	909 100%	690 76%	610 67%	445 49%	*	*	31 3%	*	*	*	
2007	821 100%	517 63%	614 75%	*	*	*	*	*	*	*	
2008	719 100%	512 71%	*	*	*	*	*	*	*	*	
2009	787 100%										

*Future Data

Initial Career Placement of Graduates (2005 – 2009)

Academic Year	2005	2006	2007	2008	2009
Degrees Conferred	322	332	351	394	459
Employed	220	224	246	232	113
Graduate/Professional School	47	32	41	48	74

Sources: Offices of Counseling Services/Career Placement

Crime Statistics (2007-2009)

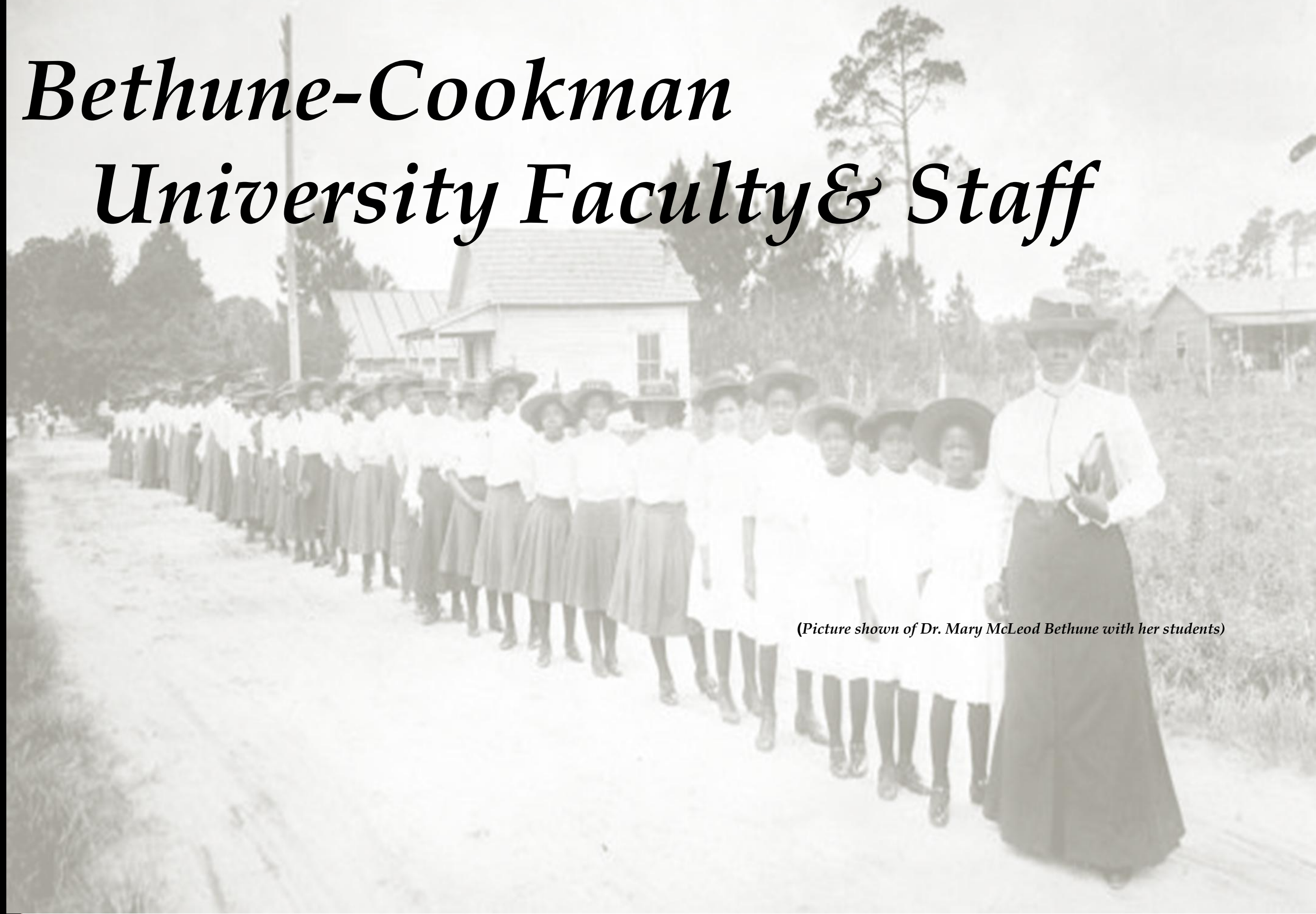
Offense	2007 Number Reported	2008 Number Reported	2009 Number Reported*
Criminal Homicide	0	0	0
Murder and non-negligent manslaughter	0	0	0
Negligent Manslaughter	0	0	0
Sex Offenses	0	0	0
Forcible Sex Offenses	0	0	0
Robbery	3	1	2
Aggravated Assault	4	5	5
Burglary	53	81	7
Motor Vehicle theft	1	4	2
Arson	0	0	0
Liquor Law violations	0	0	2
Arrests for liquor, drug, or illegal weapons possession.	0	0	0
Referred for campus disciplinary action for liquor, drug or illegal weapons possession.	0	0	5
Undergraduate Student Population	3394	3598	3594

Source: B-CU Office of Safety & Security

** Denotes the reported totals reflect a reporting period of October 09- September 2010.*

***Note:** Bethune-Cookman University is in compliance with the Jeanne Clery Disclosure of Campus Security Policy and Campus Crime Statistics Act, codified at 20 USC 1092 (f) as a part of the Higher Education Act of 1965, the Higher Education Amendments of 1998 the Campus Sexual Assault Victims Bill of Rights of 1991, and the Campus Security Act of 1990, a federal law that requires colleges and universities to disclose certain timely and annual information about campus crime and security policies.*

Bethune-Cookman University Faculty & Staff



(Picture shown of Dr. Mary McLeod Bethune with her students)

*Instructional Faculty by Full-Time, Part-Time and Full-Time Equivalent
(2005-2009)*

Headcount & Status	Fall 2005 Total	Fall 2006 Total	Fall 2007 Total	Fall 2008 Total	Fall 2009 Total
Full-Time	147	161	170	196	202
Part-Time ¹ :	54	28	33	58	28
Total Unduplicated Headcount	201	189	203	254	238
Full-Time Equivalent (FTE)*	167	176	186	215	211

¹Weekend College, offering upper level courses to off-campus and on-campus students on the main campus, including the Continuing Education Program.

*FTE = Total Credit Hours Generated/15 Teaching Hours.

*Faculty/Student Ratio
By Full-Time, Part-Time and Full-Time Equivalent
(2005-2009)*

Faculty/Student RATIO	Fall 2005 Total	Fall 2006 Total	Fall 2007 Total	Fall 2008 Total	Fall 2009 Total
Full-Time					
Faculty	147	161	170	196	202
Student	2795	2925	3181	3481	3461
Full-Time Ratio	1:19	1:18	1:19	1:18	17:1
FTE					
Faculty	167	176	186	215	211
Student	2989	3023	3253	3541	3512
FTE Ratio	1:18	1:17	1:17	1:16	1:16

Full-time Instructional Faculty - Fall 2009
By School, Gender, Ethnicity, Rank, Tenure, and Degree

School/Gender	Ethnicity			Total	Rank				Terminal Degrees	
	Black	White	Other		Professor	Associate	Assistant	Instructional		Tenure
School of Arts & Humanities										
Male	21	14	8	40	1	0	20	10	1	15
Female	18	13	1	31	2	1	9	12	1	8
Total	39	27	9	75	3	1	29	22	2	23
School of Business										
Male	7	6	2	15	2	2	7	2	1	7
Female	9	5	1	15	1	0	7	4	0	6
Total	16	11	3	30	3	2	14	6	1	13
School of Education										
Male	2	2	1	5	1	0	0	3	1	1
Female	5	7	1	13	0	2	5	2	1	5
Total	7	9	2	18	1	2	5	5	2	6
School of Nursing										
Male	2	2	0	4	0	0	0	0	0	0
Female	8	9	2	19	0	0	3	8	1	3
Total	10	11	2	23	0	0	3	8	1	3
School of Science, Engineering & Mathematics										
Male	9	3	17	29	8	6	11	2	8	23
Female	5	1	1	7	0	2	1	0	0	3
Total	14	4	18	36	8	8	12	2	8	26
School of Social Sciences										
Male	2	7	1	10	2	1	4	2	2	7
Female	9	2	1	12	2	1	4	2	3	8
Total	11	9	2	22	4	2	8	4	5	15

Full-time Instructional Faculty - Fall 2009
By School, Gender, Ethnicity, Rank, Tenure, and Degree

School/Gender	Ethnicity			Total	Rank			Instructional	Tenure	Terminal Degrees
	Black	White	Other		Professor	Associate	Assistant			
C.A.R.E.S										
Male	4	7	1	12	0	0	0	9	0	1
Female	19	8	3	30	0	0	3	14	0	1
Total	23	15	4	42	0	0	3	23	0	2
School of Graduate Studies										
Male	2	3	1	6	0	0	1	0	0	1
Female	9	4	1	14	2	0	1	0	2	4
Total	11	7	2	20	2	0	3	0	2	5
Total	131	93	42	266	21	15	77	70	21	93

Note: Classified by primary responsibility; excludes administrators, and part-time faculty

Source: Human Resources Office; Academic Affairs Office, and each individual School

** Includes Degree Programs Only*

Full Time Teaching Faculty Profile (2005-2009)

Category	Fall 2005	Fall 2006	Fall 2007	Fall 2008	Fall 2009
Rank					
Professor	22	21	16	21	26
Associate	18	17	22	25	17
Assistant	59	70	75	82	80
Instructor	46	51	55	65	85
Other	2	2	2	3	30
Total	147	161	170	196	238
No. By School					
Arts & Humanities	35	37	39	46	57
Business	17	17	19	25	26
Education	11	15	13	13	16
Nursing	9	12	13	14	20
Sci. Engr. Math	25	24	25	27	31
Social Sciences	21	23	22	26	21
Freshman College	29	33	35	39	0
Graduate Studies	0	0	4	6	15
Total	147	161	170	196	238
Degrees					
Doctorates	79	91	80	91	93
Masters	66	69	85	105	145
Bachelors	2	1	5	0	0
Total	147	161	170	196	238
Tenure					
Professor	16	17	16	19	21
Associate	0	0	0	0	0
Assistant	2	0	0	0	0
Instructor	0	0	0	0	0
Total	18	17	16	20	21
Ethnicity					
Black	71	71	80	92	107
White	58	69	70	75	93
Other	18	21	20	29	38
Total	147	161	170	196	238

Full Time Teaching Faculty Profile (2005-2009)

Category	Fall 2005	Fall 2006	Fall 2007	Fall 2008	Fall 2009
Gender					
Male	79	81	85	101	104
Female	68	80	85	95	106
Total	147	161	170	196	210

Five Year Staff Profile (2005-2010)

Employee Classification	2005-2006	2006-2007	2007-2008	2008-2009	2009-2010
Executive/Administrative	5 1%	8 3%	7 2%	6 2%	10 3%
Mid-Level/Managerial & Professional Support/Service	191 61%	196 62%	196 62%	213 66%	205 63%
Secretarial/Clerical	95 30%	87 28%	70 22%	75 23%	72 22%
Technical/Para-Professional	0	0	20 6%	6 2%	6 2%
*Services	24 8%	23 7%	23 7%	23 7%	31 10%
Total	315	314	316	323	324
Staff/Student Ratio	1:10	1:10	1:11	1:11	1:17



*Bethune-Cookman
University Library
& Learning Resources Center*

(Picture shown of Harrison Rhodes Memorial Social Sciences Building)

The Library/ Learning Resources Center of Bethune-Cookman University

Building occupied.....	1971
Seating capacity	501
Book capacity	147,500
Square feet (total)	39,340
Square feet (net)	33,692
Library employees (full-time)	15
Circulation	20,894

Volumes (cataloged holdings).....	126,631
Periodicals (bound volumes).....	2,460
Periodicals subscriptions.....	139
Periodicals on-line over	over 50,000
Microforms (units).....	32,000
Newspaper subscriptions	13
Newspaper on-line	over 2,000
Maps (atlases only)	52
Audio/Video Material (VHS & DVD)	1,188
Records (albums)	250
E-books (Net library)	46,870

Note: The Library has gone through and extensive weeding process of the entire collection over the last few years. The significant decrease in the number of volumes held is due to the level, discarded and replaced by the electronic version.

Year	Volumes Added	Volumes Held	Units of Microform	Periodical Titles	Circulation	Attendance
2002-03	2,921	173,193	60,150	770	35,200	153,950
2003-04	2,290	175,483	60,300	770	22,516	161,080
2004-05	7,425	187,908	60,300	189	17,722	164,722
2005-06	2,413	103,587	60,300	172	19,343	175,380
2006-07	7,425	111,012	60,300	790	10,412	194,651
2007-08	7,835	118,865	60,300	99	13,212	189,896
2008-09	7,916	126,631	53,000	138	12,078	75,039
2009-10	19,037	127,930	35,000	139	20,894	223,250

Based on the library's budget, the Library Director determines the total amount of library collection development funds to be used by the academic departments for the purchase of library materials. The following procedure describes how that amount is divided among the academic departments:

- Number of faculty in Department
- Number of undergraduate and graduate majors in the Department
- Average price of books for the discipline
- Number and level of courses offered by the Department
- Collection use by the Department
- Student enrollment in courses by the Department
- Average age of the collection in each subject area.

* The inter-disciplinary nature of many programs will be considered

In the interest of maintaining the integrity of the library collection, the Library Director is responsible for insuring that materials ordered by individual departments or schools are appropriate to and adequate for the

research needs of students. The Library Director reserves the right to require a department to reassess how it is using its allocation if the department orders appear to contradict the research needs of BCU students and faculty. The School of Nursing is accredited by the National League for Nursing Accrediting Commission (NLNAC) and the School of Education is accredited by the National Council for Accreditation of Teacher Education (NCATE). The library uses the standards of these accrediting bodies to ensure that the monies allocated for these schools satisfies the requirements for accreditation.

Source: Library/Learning Resources Center

Academic Computers Available For Student Use - Fall 2009

Location	# of Computers
Nursing Lab	18
Freshman College <ul style="list-style-type: none"> • Tri-Lab -29, • Reading Lab -25, • Writing Lab -22, • Testing, Extended Math and Training Lab -14 	90
Harrison Rhodes Hall (Social Sciences Lab)	22
Helen Kottle Bldg (Education Lab)	46
Gross Science Hall/Gainous Annex (Science/Math Lab)	91
Julia Robinson Hall (Music Lab)	32
Fine Arts Center (Humanities Lab)	35
Holmes Business Bldg (Business Lab)	49
Swisher Library	64
Living Learning Center (LLC)	12
Parlin Student Center -14	14
Athletics Facility Lab	18
Men's Dorms	9
Women's Dorms	20
TOTAL	520

Note: Each room in the residence halls is wired for Internet in addition to wireless campus

Enrollment in On-Line Courses & Electronic Information Services 2009 – 2010

Electronic Information Services:

ProQuest:

ABI/INFORM DATELINE, ABI/INFORM GLOBAL, ABI/INFORM Trade and Industry, ERIC, ProQuest Nursing and Allied Health Source, ProQuest Psychology Journals, ProQuest Research Library, ProQuest Newspapers, and ProQuest Historical Newspapers- the Chicago Defender (1905 - 1975); The New York Times (1851-2005)

EBSCO HOST:

Academic Search Complete; Business Source Complete; Hospitality and Tourism Complete; Literary Reference Center; Medline w/full-text; CINAHL Plus w/Full-text; Communication & Mass Media Complete; Health Source: Nursing/ Academic Edition; A-Z, SocIndex with full-text; Mental Measurements Yearbook; Tests in Print; GreenFILE

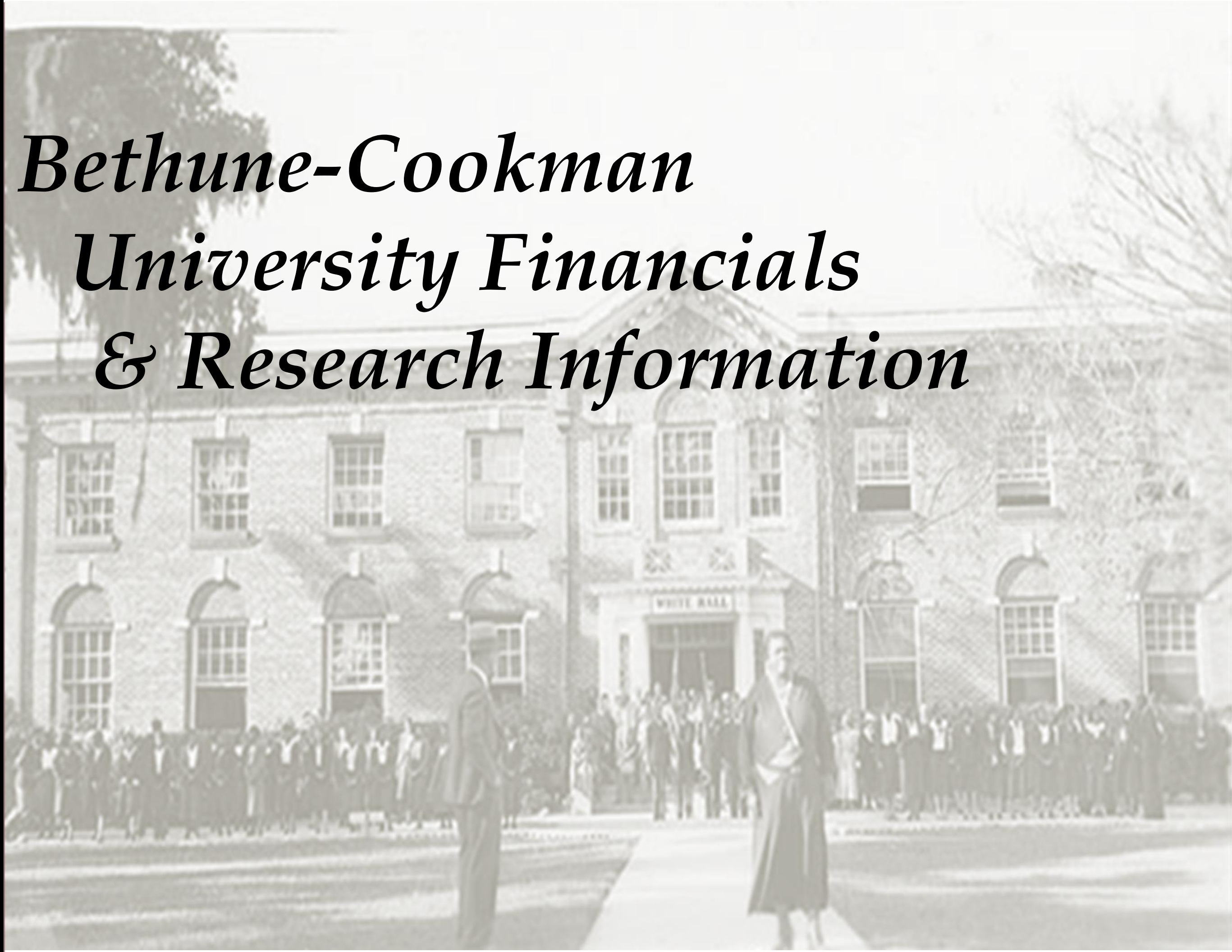
Other Online Databases:

Black Studies Center; Britannica Online; Newsbank; JSTOR; LEXIS-NEXIS; Current Biography; Black Drama; Gale’s Nursing Resource Center and Literature Resource Center; ACM; IEEE; NetLibrary; CREDO,, and African-American Biographical Database.

Hybrid/blended online courses (Fall 2009-10)	Total (undergraduate and graduate)	Graduate/ first- professional
Number of online courses	44	0
Number of enrollments	779	0

Source: Center for Information Technology

*Bethune-Cookman
University Financials
& Research Information*



***Student Costs per Academic Year
Fiscal Years 2005-2010***

Expense	2005-06	2006-07	2007-08	2008-09	2009-10
Tuition & Fees	\$11,230.00	\$11,792.00	\$12,382.00	\$12,876.00	\$12,936.00
Room & Board Curtis, JaFlo, Meigs, Joyner, LeFevre, Bronson, Bronson Annex, Living Learning Ctrs	\$6,692.00	\$7,206.00	\$7,378.00	\$7,672.00	\$7,672.00
Total Costs:	\$17,922.00	\$18,818.00	\$19,760.00	\$20,548.00	\$20,608.00

Average On-Campus Student Expense	Academic Year 2005-06	Academic Year 2006-07	Academic Year 2007-08	Academic Year 2008-09	Academic Year 2009-10
Full-time Tuition (12-17 credit hours through 2007-08) (12-18 credit hours starting 2008-09)	\$11,230.00	\$11,792.00	\$12,382.00	\$12,876.00	\$12,936.00
Room & Board	\$6,692.00	\$7,010.00	\$7,328.00	\$7,672.00	\$7,672.00
Books & Supplies	\$820.00	\$850.00	\$880.00	\$915.00	\$1,000.00
Transportation	\$800.00	\$830.00	\$860.00	\$890.00	\$890.00
Personal	\$2,700.00	\$2,800.00	\$2,900.00	\$3,000.00	\$3,000.00
Total	\$22,242.00	\$23,282.00	\$24,350.00	\$25,335.00	\$25,498.00

Sources: Offices of Fiscal Affairs and Financial Aid

Note: Part-time (up to 11 credit hours) tuition charged per credit hour

Distribution of Financial Aid Recipients by Program (2009-2010)

Program	Male	Female	Total	% of Total 3,614 Enrollees Receive Aid	Total Amount Awarded
GRANTS					
Federal					
SEOG	902	1,537	2,439	67.5%	962,883
Pell	1,011	1,605	2,616	72.4%	12,268,151
State					
FSAG	610	991	1,601	44.3%	1,479,919
FTVF	804	1,249	2,053	56.8%	4,775,728
SCHOLARSHIPS					
Institutional	461	490	951	26.3%	8,292,240
Other	294	579	873	24.2%	3,996,212
LOANS					
Perkins/GSL/SLS/ Plus	1,197	1,911	3,108	86.0%	34,982,733
CWS	84	170	254	7.0%	502,537
Unduplicated Count	1,406	2,132	3,538	97.9%	67,260,403

Distribution of Financial Aid by Category (2005-2010)
Dollars Awarded

Academic Year	Bethune-Cookman University Scholarships	PELL/SEOG/ FSAG Grants	Work Study	Other*	Total Dollars Awarded
2005-06	7,224,848	8,670,829	466,309	28,658,395	45,020,381
2006-07	7,134,810	8,497,997	467,806	29,991,853	46,092,466
2007-08	7,743,112	10,036,493	621,600	38,394,994	56,796,199
2008-09	8,490,736	11,132,406	372,425	45,951,048	65,946,615
2009-10	8,292,240	14,710,953	502,537	43,754,673	67,260,403

Number of Recipients

Academic Year	B-CU Scholarships	PELL/SEOG/ FSAG Grants	Work study	Other*	Total Unduplicated
2005-06	816	4,536	235	5,022	2,965
2006-07	804	4,359	261	5,000	2,998
2007-08	814	5,133	254	5,498	3,319
2008-09	915	5,909	174	5,786	3,528
2009-10	951	6,656	254	6,034	3,538

Pell Grant Distribution (2005-2010)

Academic Year	Male	Female	Total	% of Enrollment	Total Fall Enrollment	Total Dollar Awarded
2005-06	767	1,219	1,986	64%	3,090	6,506,259
2006-07	797	1,143	1,940	62%	3,111	6,331,607
2007-08	917	1,296	2,213	65%	3,394	7,621,757
2008-09	943	1450	2,393	66%	3,633	9,041,711
2009-10	1,011	1,605	2,616	72%	3,614	12,268,151

***Revenues, Gains and Support
Fiscal Years 2004-2009***

Source/Years	2004-05	2005-06	2006-07	2007-08	2008-2009
	\$	\$	\$	\$	\$
Tuition and Fees	31,108,877 56.7%	34,764,440 51.8%	36,919,628 54.9%	43,005,729 70.4%	46,935,273 79.6%
Less Scholarship Allowance	(9,171,377) (16.7%)	(9,712,766) (14.5%)	(10,118,972) (15.0%)	(11,490,113) (18.8%)	(11,645,884) (20.3%)
Federal Grants and Contracts	6,278,152 11.5%	6,355,553 9.5%	4,144,659 6.1%	4,921,533 8.1%	5,953,740 10.1%
State Grants	4,115,821 7.5%	5,170,633 7.7%	5,782,936 8.6%	5,170,828 8.5%	4,724,281 8.5%
Private Gifts and Grants	6,258,757 11.4%	9,123,054 13.6%	7,479,275 11.1%	6,825,593 11.2%	5,516,953 10.2%
Net Gains and Investment Income	3,185,434 5.8%	4,187,445 6.2%	5,278,568 7.8%	(4,791,892) (7.8%)	(10,367,004) (17%)
Other Income	791,885 1.4%	3,229,630 4.8%	1,227,018 1.8%	1,311,656 2.1%	1,554,217 3.4%
Auxiliary Enterprises	12,257,473 22.4%	14,057,413 20.9%	14,073,957 20.9%	16,114,192 26.4%	16,162,618 27.1%
Total Dollar Amount	54,825,022	67,175,204	67,239,597	61,067,526	58,834,194

Expenses and Losses (Fiscal Years 2004-2009)

Expenses and Losses	2004-05	2005-06	2006-07	2007-08	2008-2009
Educational & General					
Instruction	13,963,952 28.30%	15,690,863 31.30%	16,391,986 29.90%	18,058,712 31.3%	19,374,630 30.56%
Research	81,256 0.20%	14,626 0.00%	13,367 0.00%	18,171 0.00%	(Included with Instruction) 0.00%
Public Service	-0-	-0-	-0-	-0-	-0-
Academic Support	1,058,302 2.20%	1,098,592 2.20%	1,307,055 2.40%	1,115,355 1.93%	1,435,768 2.26%
Student Services & Activities	3,795,432 7.70%	6,086,243 12.20%	6,115,708 11.10%	6,463,738 11.21%	7,348,576 11.59%
Institutional Support	10,314,007 20.90%	9,609,248 19.20%	11,594,135 21.10%	12,183,532 21.14%	12,625,114 19.91%
Operation & Maintenance	6,951,965 14.10%	6,275,254 12.60%	8,018,809 14.60%	7,449,929 12.92%	8,828,906 13.93%
Interest on Debtedness	1,484,066 3.00%	*	*	*	*
Depreciation & Amortization	2,670,889 5.40%	*	*	*	*
Aux. Enterprises/Mandatory Transfers	8,967,902 18.20%	11,285,515 22.50%	11,398,832 20.80%	12,338,979 21.41%	13,780,495 21.74%
* Amounts redistributed among E&G Categories					
Total Dollar Amount	49,287,771	50,060,341	54,839,892	57,628,416	63,393,489

Source: Annual Financial Statements audited by Ernst and Young, LLP

Note: Percents may not add up to 100 due to rounding per Finance & Budget

***Funded Grants & Contracts
Office of Sponsored Programs
2009-2010***

Project/School	Funding Agency	Grant Award Period	\$ Funding 2009-2010
Freshman College			
Student Support Service	USDOE, TRIO	9/1/2005-8/31/2009	\$334,610.00
Title III- HBCU Connecting the Heart, Head and Hand	USDOE, Title III B-IDUES	10/1/2007-9/31/2012	\$447,422.00
Mellon Grant	Andrew Mellon Foundation	2006-2009 (2 nd of 3-year grant)	\$152,406.00 (3 rd year)
School of Education			
Title III-Teacher Education	USDOE, Title III B-IDUES	10/1/2007-9/31/2012	\$121,105.00
Urban Teaching Institute	Florida House of Representatives, Bruce Antone	2008-2009	\$29,800.00
School of Business			
SYPRIS			
School of Nursing			
Title III Strengthening the Nursing Program	USDOE-Title III-B, IDUES	10/1/2007-9/31/2012	\$473,072.00
Closing the Gap	Florida Dept. of Health	10/1/08-6/30/09	\$46,647.00
Domestic Violence	Ensync	07/01/08 - 06/30/09	\$18,000.00
Title III-Expansion of the Human Resources Management	USDOE, Title III-B, IDUES	10/1/2007-9/31/2012	\$209,147.95
Improving Institutional Research for 1 st Year Student Outcomes	USDOE, Title III-B, IDUES	10/1/2007-9/3/2012	\$114,162.00

***Funded Grants & Contracts
Office of Sponsored Programs
2009-2010***

Project/School	Funding Agency	Grant Award Period	\$ Funding 2009-2010
School of Performing Arts/Humanities			
Title III-Preparing Students for Future Music Careers	USDOE, Title IIIB-IDUES	10/1/2007 - 9/31/2012	\$361,398.00
Mellon Grant Hum. Endowment	Andrew Mellon Foundation	1984-Petuity	\$60,000.00
Project Pericles	Project Pericles, Inc., Blue Cross/ Blue Shield	2003-2010	\$38,800.00
Title III-Continuation of the Mass Com Program	USDOE, Title III IDUES	10/1/2007- 9/31/2012	\$328,484.00
Title III - Performing Arts Center	USDOE, Title III-B, IDUES	10/1/2007-9/31/2012	\$95,829.00
School of Science/Math			
Title IV Part J	USDOE	10/01/08 - 09/30/09	\$1,069,613.00
Major Research Instrumentation-MRI	NSF	07/01/08 - 06/30/09	\$223,000.00
Florida/Georgia Alliance for Minority Participation (FGAMP)	NSF, Subcontract W/FAMU, B-CC	1/2009-10/2009	\$32,240.00

***Funded Grants & Contracts
Office of Sponsored Programs
2009-2010***

Project/School	Funding Agency	Grant Period	\$ Funding 2009-2010
Institutional or Administrative			
Black Male Explorers	Subcontract w/FAMU	7/1/2008-6/30/2009	\$132,000.00
Title III-Archival Development and Equipment Enhancement	Library USDOE, Title III-B, IDUES	10/1/2007 - 9/30/2012	\$142,028.00
AmeriCorps	State of Florida	9/08-9/09	\$159,436.00
Raytheon	Raytheon Missile Systems , Raytheon, Texas	2005-2009	\$120,750.00 & \$35,392.00
Access Retention to Graduation Program	State of Florida	8/08 - 11/09	\$3,668,256.00
Jessie DuPont Foundation	JB DuPont Foundation	2007-2009	Total award \$150,000.00
Title III \$50,000.00 Endowment Challenge Grant	USDOE Title III Endowment	2003- 2023	\$50,000.00
Title III \$750,000 Endowment Challenge Grant	USDOE Title III Endowment	1997-2017	\$750,000.00
William Hearst Endowed Scholarship Fund	Hearst Foundation	2006-Perpetuity	\$100,000.00
Title III HBCU - Improving Institutional Effectiveness Through Admin. Management	USDOE, Title III-B, IDUES	10/1/2007 9/30/208	\$604,940.00
Black College Fund	United Methodist Church	2009	\$36,000.00
UNCF Oral History	UNCF	10/01/08 - 06/30/09	\$12,000.00
UNCF Faculty Development	UNCF	07/01/08 - 06/30/09	10,000.00
Library	National Endowment for Humanities	10/01/08 - 04/30/09	\$2,500.00
Title III HBCU - Program Administration	USDOE, Title III-B, IDUES	10/1/2007-9/30/12	\$163,660.00
Library - State of Florida	State of Florida	July 1, 2009 - June 30, 2010	\$45,517.00
Lettie Pate Whitehead Foundation, Inc.	Lettie Pate Whitehead Foundation, Inc.	2009-2010	\$138,000.00 (Scholarships)
Teacher in A New Era	Subcontract with FAMU	2009-2010	\$35,000.00

Sources: Offices of Sponsored Programs/Grants Management

Bethune-Cookman University Campus Buildings 2009-2010

#	Building Name	Occupancy	Class	Year Acquisition (a) Constr.(c)	Year Last Major Renovation	Total Square Footage	Assignable Square Ft.	Actual Investment \$	Estimated Replacement Cost \$
1	White Hall	1	M	1916c	2002	20,720	17,196	550,000	3,522,400
2	Curtis Hall	3	M	1922c	1962	18,246	17,686	525,000	3,522,400
3	Bethune Foundation (House)	6	W	1923c	2008	2,500	2,500	175,000	425,000
4	Cookman Hall	Vacant	M	1924c	1995	23,292	22,500	1,214,900	3,959,640
5	Faith Hall	2	M	1934c	1978	3,895	3,895	200,000	662,150
6	Rhodes Hall	2	M	1941c	1977	17,982	17,982	735,000	3,056,940
7	Adams Infirmary	4	M	1947c	1974	3,673	3,449	250,000	624,410
8	Gross Science Hall	2	M	1948c	1973	29,664	24,025	1,100,000	5,024,880
9	Ranslow Hall	4	M	1948c	1977	4,440	2,828	165,000	754,800
10	Moore Gymnasium	4	M	1954c	1992	25,146	20,400	513,320	4,274,820
11	Meigs Hall	3	M	1957c	1987	27,494	20,648	725,000	4,673,980
12	Fac. Development Ct	2	M	1963c	1995 Exp.	3,246	3,000	74,345	551,820
13	Kettle Hall	2	M	1964c		19,754	18,996	550,000	3,358,180
14	Perkins Guard House	5	M	1966c		100	100	5,000	17,000
15	LeFevre Hall	3	M	1966c		27,710	13,365	925,000	4,710,000
16	Parlin Center	4	M	1966c	1992	33,492	31,030	2,090,947	5,693,640
17	Davis A/C Plant	5	M	1966c		1,710	1,710	225,000	290,700
18	Robinson Music Hall	2	M	1968c	2003	6,984	6,984	675,000	1,187,280
19	Veva Maintenance	5	M	1968c	1974	7,650	5,554	175,000	1,300,500
20	Carl Swisher Library	2	M	1974c	1988	35,095	29,340	1,275,000	5,966,156
21	Ja-Flo Davis Hall	3	M	1971c		34,980	21,598	1,125,000	5,946,600
22	Laundry	5	M	1974c		3,850	3,488	175,000	654,500
23	Cook Adm/Fin. Aid	4	M	1974c	1998 Exp.	5,667	4,628	323,310	963,390
24	Judson-McPhillips	1	M	1974c	1998	7,250	5,075	323,310	1,232,500
25	Greenhouse	5	M	1975c		800	800	5,000	50,000
26	Joyner Hall	3	M	1978c		42,066	41,400	742,500	7,151,220
27	Bronson Hall	3	M	1978c	1998	42,066	41,400	742,500	7,151,220
28	Bronson Hall Annex	3	M	1998c		85,333	59,733	4,439,000	14,506,610
29	George Miller Ctr	2	M	1991c	2004	5,200	3,640	410,000	884,000
30	Mickens Sci. Lecture	2	M	1980c		2,420	2,420	180,000	411,400
31	Americorp's Bldg.	1	M	1980c	1987	1,457	1,457	90,000	247,690
32	Scholarship Houses	3	W	2006c	--	9,084	8,200	1,000,000	1,300,000
33	Student Support Services	2	W	2001a		1,344	1,277	85,000	228,480
34	General Studies	2	M	1987a	1988	5,616	3,621	330,000	954,720
35	Wildcat Training Center	2	M	1989c		2,160	1,800	100,000	367,200
36	Living Learning Center	3	M	1989c		70,100	50,099	3,800,000	11,917,000
37	LLC Security Bldg	4	M	1992c	2006	104	104	6,240	17,680
38	Faith Hall Annex	1	M	1989c	2006	1,152	1,040	57,000	195,840
39	Gainous Science	2	M	1989c	2008	23,187	17,280	2,300,000	3,941,790

40	Bethune Fine Arts	2	M	1991c		38,404	20,208	5,936,000	6,528,680
41	Miller Procurement	1	M	1993c	--	3,900	3,315	350,000	663,000
#	Building Name	Occupancy	Class	Year Acquisition (a)Constru.(c)	Year Last Major Renovation	Total Square Footage	Assignable Square Ft.	Actual Investment \$	Estimated Replacement Cost \$
42	Holmes Business	2	M	1998c		45,000	31,500	3,685,000	7,650,000
43	Civic Engagement	4	M	2002a	2003,2006	75,205	61,851	3,685,000	20,784,850
44	Grounds/Auto Main	5	M	2002a	2003	2,050	1,850	Included in	300,000
45	Storage Units	5	M	2002a	2003	4,312	3,889	Wildcat Ctr.	200,000
46	Graduate & Profess.	1	M	2002a	2003	1,940	1,746	308,460	328,800
47	P.A.C	7	M	2003c	--	98,215	89,970	23,500,000	30,000,000
48	Handfield Music Bldg	2	M	2003c	--	18,120	17,336	2,825,300	3,060,000
49	Nursing School	2	M	1988a	2003	4,620	4,158	378,000	785,400
50	Lucas Business Bldg	7	M	2000a	2005	4,018	3,616	176,500	683,060
51	Russ Business Bldg	7	M	2004a	2005	8,472	7,625	195,000	1,440,240
52	Teco Chiller Plant	5	M	2004c	--	4,956	4,460	2,659,482	3,000,000
53	Financial Operations	1	W	2005a	--	2,952	2,900	63,219	169,430
54	Print Shop	1	M	1994a	2006	600	600	200,000	250,000
55	L. Gale Lemerand School of Nursing	2	M	2006a	2007	34,000	31,000	1,445,000	6,800,000
56	Athletic Coaches Complex/Weight Room	7	M	2007a	2008	13,479	13,479	500,000	2,695,000
57	Wesley Female Residence	3	M	2008a	2008	4,450	4,450	270,000	534,000
58	Female Residence 644 State Street	3	M	2006a	2008	2,071	2,071	134,615	248,520
59	Female Residence 332 Model Street	3	M	1997a	2006	1,814	1,814	117,910	217,680
60	325 MLK Blvd.	2	M	2005a	2008	1,494	1,494	100,110	179,280

Occupancy:

1. Administrative Building
2. Academic Building
3. Housing
4. Student Services Building
5. Physical Plant
6. National Historical Site
7. Multi Purpose

Permanence of Building:

- M. Masonry
- W. Wooden

Sources: Offices of Fiscal Affairs/Procurement Building Valuation Data

